

INAZUMA®

FILTERTECHNIK MADE IN GERMANY



Installation and Operating Instructions

INAZUMA HD PRO 50.000 ^{V2} High-Performance Duo UVC Lamp

Inhaltsverzeichnis

| | | |
|-------|---|---|
| 1. | General information | 3 |
| 1.1. | Introduction | 3 |
| 1.2. | Warning labels | 3 |
| 1.3. | Safety notes and warnings | 3 |
| 1.4. | Additional safety instructions | 3 |
| 1.5. | EAR-Registrierung | 4 |
| 1.6. | WEEE-registration | 4 |
| 1.7. | Alteration and modification | 4 |
| 1.8. | Spare parts | 4 |
| 1.9. | Description and function of the product | 4 |
| 1.10. | Technical Data | 4 |
| 1.11. | Warranty..... | 4 |
| 2. | Installation and maintenance | 5 |
| 2.1. | Notes on installation and maintenance | 5 |
| 2.2. | Connection to the ballast unit | 5 |
| 2.3. | Mounting inside the filter..... | 5 |
| 2.4. | Replacement of the UVC illuminant..... | 6 |
| 2.5. | Replacement of the quartz tube | 7 |

1. General information

1.1. Introduction

We congratulate you on the purchase of the high performance Duo Lamp HD-Pro 50.000 ^{v2}.

To avoid damage and a limiting of the warranty it is important to read this manual carefully.

To ensure your UVC works properly, we ask that you carefully follow all instructions, notes and information given in this manual. If any questions or problems arise that are not covered in this manual, please contact your dealer / seller of this UVC lamp.

1.2. Warning labels

In this manual, you will find these two signs.

They point out important warnings or significant Informations.



1.3. Safety notes and warnings

This manual should be kept accessible at all times as it contains important information on use, installation, troubleshooting, etc.

It is recommended to keep a copy of this manual close to the UVC so that e.g. technicians are able to get quick access to all informations they need.



The Inazuma immersion-UVC can only be installed in closed filter systems.

This UVC device is equipped with safety mechanisms and must therefore be operated in Inazuma drum filter systems only.

The mains plug may only be plugged into the WebCSA control. This ensures that when the lid is opened the lamp is switched off.

The device can only be operated, if your house wiring owns a ground fault circuit interrupter (GFCI) / residualcurrent device (RCD) (30 mA for humid environment) and the power supply is connected to said system. It is also recommended to use an overvoltage protection class D or 4 (depending on your local guidelines).



The mains power plug is not included in delivery. The connection must be carried out according to the norm EN60335-2-109 qualified personnel.

PLEASE NOTE

The manufacturer will not assume responsibility for any damages emerged by misuse of the product or parts of it or by non-observance of rules, guides and instructions provided in this and other documents provided with the device.

1.4. Additional safety instructions and warnings



Ultraviolet light can cause damage on eyes and skin.

Always protect yourself and others from direct UVC light! The UVC lamps must be mounted in a way, that nobody might be exposed to the light by accident. If you notice any painful reactions, please contact a doctor.

Do not expose any humans, animals or plants to the radiation.

Operate the device only, when there is nobody in the water.

Put the UVC lamp only in operation, when it is completely immersed under water!

The ballast unit is protected against splash water (protection class IP65).

Always pull the mains plug during maintenance (e.g. changing of the illuminant or cleaning of the quartz tube).

The immersion-UVC must be protected from frost. Temperatures below the freezing point can damage the illuminant or the quartz tube.

In case parts of the immersion UVC (especially the quartz glass) are damaged, the lamp must not be brought to operation.

The device must be cleaned and descaled regularly to ensure a proper functioning.

1.5. WEEE-registration

The WEEE-registration ensures that the producers are assuming liability for their electrical and electronic equipment, especially the responsibility for recycling and disposing of these according to the "ElektroG".

The Federal Environment Agency of Germany (Umweltbundesamt) confirms the registration of this product under the following number:
WEEE-Reg.-Nr. DE 19429673

1.6. EC-Declaration of Conformity

Manufacturer: Inazuma



Johannes Kurzweil GmbH
Eisackstraße 16
86165 Augsburg

Phone: +49 (0)821-72 919 72

Fax: +49 (0)821-72 919 73

E-Mail: info@inazuma-online.com

Web: www.inazuma-online.com

Device type: Immersion UVC lamp including electronic ballast unit

The manufacturer declares hereby the conformity of the product with the safety requirements mentioned above.

1.7. Alteration and modification

We point out that every alteration or modification without written approval by Inazuma or one of its authorized suppliers will cause the immediate annulment of the CE conformity assessment. Inazuma will not assume liability for damages on persons or property emerged by unauthorized alterations or modifications.

The Inazuma immersion UVC lamp can only be used in closed filter systems by Inazuma.

1.8. Spare parts

Only spare parts from Inazuma or an authorized dealer may be used.

Only assemble with suitable special tools.

If parts from other manufacturers are installed, no liability whatsoever will be assumed for any damage.

1.9. Beschreibung und Funktion

- Energy saving high-performance UVC lamp
- "Longlife" durability of up to 16.000 hours
- Two lamps (55 watt each) can be plugged into one ballast unit
- Wavelength range 253.7 nm (nano meters)
- Germ-reducing effect through destruction of the cell structure of bacteria, algae and viruses

1.10. Technical data

| | |
|--------------------------------|-----------------|
| Nominal voltage: | 230 V / 50 Hz |
| Max. power: | 130 W |
| Lamp power: | 55 – 120 W |
| Lifetime up to: | 16.000 hours |
| Protection class ballast unit: | IP-65 |
| Protection class UVC lamp: | IP-68 |
| Length of the quartz tube: | 50 cm |
| Cable length: | 3 m |
| Socket material: | Stainless steel |

1.11. Warranty

The warranty is limited to the device (ballast unit and lamp).

Wear parts, as the illuminant and quartz glass, are excluded from the warranty.

The manufacturer is generally not liable for damage resulting from accident or improper installation or use and its consequential damages.

The liability is limited to the replacement of the defective device.

This warranty is not transferable.

2. Installation and maintenance

2.1. Notes on installation and maintenance



- The device can only be installed and used in closed filter systems
- The ballast unit must be mounted in a dry spot with protection from direct sunlight
- Glass or artificial glass protects from UVC radiation and can be used as a transparent coverage
- The immersion lamp must be protected from frost, temperatures below the freezing point can damage the illuminant and quartz tube
- The electronic ballast unit produces heat, that dissipates through the housing
- Max. operating temperature 50 °C
- Protected the ballast unit from direct sunlight
- Disconnect the mains plug before carrying out any maintenance work!
- Work on electrical parts may only be carried out by qualified personnel
- Do not touch the lamp in the glass part
- We recommend to exchange the illuminant every two years

2.2. Connection to the ballast unit

Connect the UVC lamp or lamps as shown in the pictures below. Incorrect installation will damage the ballast unit!

For single lamp operation, the right socket must be used.



If you want to connect two lamps, use the sockets on the left side of the ballast unit.



2.3. Mounting in the drum filter

All Inazuma drum filters of the MK VI series have one or more internal brackets for easy installation of immersion UVC lamps (suitable for the Inazuma high-performance duo UVC HD-PRO-50.000 V2).



Installation:

Insert the immersion UVC into the stainless steel holder from above. Be careful not to damage the quartz tube.



The HD Pro 50.000 V2 should now rest with the union nut on the top of the holder.

Depending on the mounting location of the UVC mount, it may be necessary for some filter models to loosen the nut of the gas pressure absorber in order to be able to insert the immersion UVC into the brackets.



2.4. Replacement of the UVC illuminant (Art. No. IK4010)

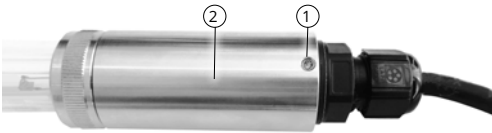


ATTENTION! Electric hazard! Always disconnect the device from the power supply in order to change the illuminant or quartz tube.



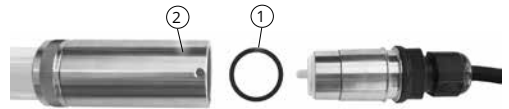
In order to protect the UVC emitter from possible breakage, you should protect it with a cloth or foam when replacing the illuminant or the quartz tube and carry out the work in a safe workplace.

1.



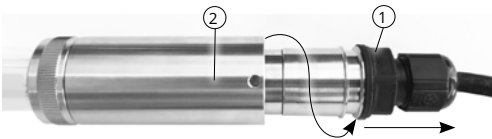
Loosen the laterally positioned threaded pin M4 (1) with an Allen key from the sleeve (2).

4.



The O-ring (1), which is located in the sleeve (2) should also be replaced when replacing the illuminant.

2.



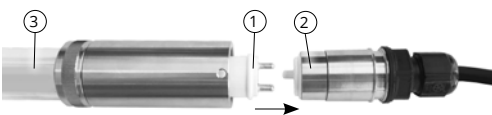
Then pull the cable closure (1) out of the sleeve (2) while turning it slightly.

5.



Now you can gently insert the new illuminant and reconnect all parts in reverse order.

3.



Pull the UVC illuminant (1) straight out of the 4-pin lamp plug (2). Then, carefully pull the illuminant out of the quartz tube (3).

2.5. Replacement of the quartz tube (Art. No. IK4020)



ATTENTION! Electric hazard! Always disconnect the device from the power supply in order to change the illuminant or quartz tube.



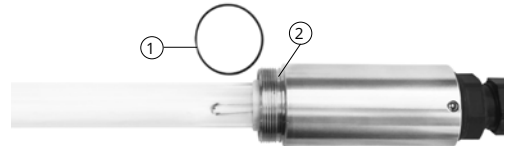
In order to protect the UVC emitter from possible breakage, you should protect it with a cloth or foam when replacing the illuminant or the quartz tube and carry out the work in a safe workplace.

1.



Carefully loosen the nut (1) from the sleeve (2) by hand.

4.



Also, replace the 25 x 1 mm O-ring (1) on the thread of the sleeve (2) with a new one.

2.



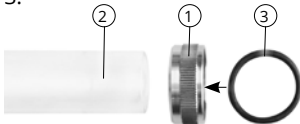
With a slight twist (without tools), pull the quartz tube (1) out of the sleeve (2).

5.



You can now connect all parts with the new quartz tube in reverse order.

3.



Pull the nut (1) from the quartz tube (2) by rotating it and replace the 23.47 x 2.62 mm O-ring (3) inside the nut (1).

You will be amazed!



Manufacturer:

Inazuma
Johannes Kurzweil GmbH
Eisackstraße 16
86165 Augsburg

Tel.: +49 821 / 72 91 97 2
Fax: +49 821 / 72 91 97 3

Email: info@inazuma-online.com
Web: www.inazuma-online.com